



Heavy Ribbon Wedge-Wedge Bonder 5350HR

Bond System

| | |
|--------------------------|--|
| Wire types | Aluminium Ribbons up to 2000x300µm Copper wire 300-500µm on 4" spool |
| Bondhead | Wedge-Wedge for Ribbons Standard capillaries 2" (up to 19mm) Motorized wire spool (optional) Programmable Voice-coil bond fore system From 0 up to 1.800cN (amplifiable up to 4.000cN) |
| Ultrasonic System | F&S Generator 58kHz (optional 40, 90, 120kHz) |

Bonder Base

| | |
|--------------------------|---|
| Axes | <ul style="list-style-type: none">• Programmable linear Z-axis with 60mm stroke• Programmable linear Y-axis with 20mm stroke• Standard working height: 55 mm• Manipulator in X and Y: 18x18 mm• Equivalent to: 1: 7 |
| Hardware | <ul style="list-style-type: none">• Stepper motor driven Z-linear axis,• Single-board PC, coin-guided teach-in,• Internal hard disk, operation and menu-guided via shuttle wheel with confirmation button |
| Software | <ul style="list-style-type: none">• Programmable single Bonds• Loop shapes can be saved |
| Control | Manual, semil-automatic |
| Dimensions | W x D x H – 63 x 58 x 40 cm, weight approx. 30kg |
| Connections | 100-230 VAC, 1 Phase, 50/60 Hz, max 230 VA Ø 6mm standard-vacuum tubing |
| Heater controller | Intergraded in the machine 0-250 °C |

The 53xx Series:

The Heavy Ribbon Bonder 5350HR can process aluminium ribbons up to 2000x300 µm and copper wire from 300 to 500µm.

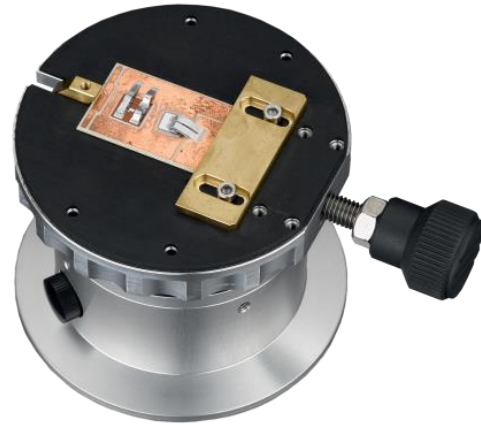
Due to the motor driven Z-axis you work always with repeatable results. Additionally every parameter can be saved to the internal harddisk.

You always work with repeatable results – also after a lot of years. The handling, supported by a colour display and the input with an shuttle-wheel make the programming of the machine very easy. The operator can create different kinds of loops with the manipulator system. Operators require only a minimum of training, making the 5310 manual ball bonder the ideal choice for prototype, re-work and smallscale production.

The 5310 is perfect suited for complex bond- tasks, optimal quality and the most favourable price. This machine is the right choice for such applications.

Workholder

Standard-Workholder
for parts up to 4x4" with
vacuum and mechanical clamping



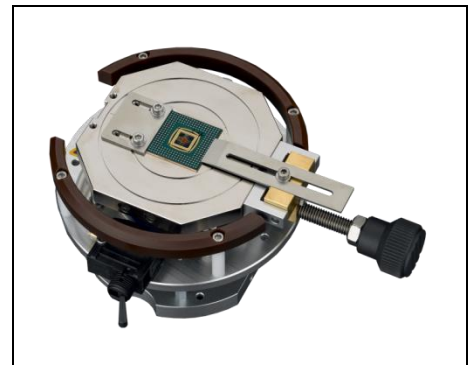
Optional:



for parts up to 4x4"
workholder with mechanical
clamping



4x4" workholder with
rubbered surface and
mechanical clamping



Ø80mm Workholder
With mechanical clamping

F&S Bondtec Semiconductor GmbH

Industriezeile 49a

A-5280 Braunau am Inn

Tel.: +43-7722-67052-8270

Fax: +43-7722-67052-8272

Mail: info@fsbondtec.at

Web: www.fsbondtec.at



Ihr Vertriebspartner/ Votre représentant:

Hilpert electronics AG
Täferstrasse 29
5405 Baden-Dättwil
Schweiz / Suisse

Tel: +41 56 483 25 25
Fax: +41 56 483 25 20
Mail: office@hilpert.ch
Web: www.hilpert.ch

