



## Heavy Wire Wedge-Wedge Bonder 5650

### Bond System

<b>Wire types</b>	Aluminium wire 100-500µm on 4" spool Copper wire 100-300µm on 4" spool
<b>Bondhead</b>	Wedge-Wedge for heavy wire, Front- or Backcut Standard tool of 2" length, (up to 90mm) Motorized wire spool (optional) Programmable Voice-oil bond force system From 0 up to 1.800 cN
<b>Ultrasonic System</b>	F&S Generator 58 kHz (optional 40, 90, 120)

### Bonder Base

<b>Axes</b>	<ul style="list-style-type: none"> <li>• Working area X/Y-axis 100x100mm Z-axis 60mm</li> <li>• Step resolution 0,25µm</li> <li>• Repeatability &lt;2µm</li> </ul>
<b>Hardware</b>	<ul style="list-style-type: none"> <li>• Dual Core PC, 1,6 GHz processor,</li> <li>• 4 GB RAM, Ethernet, 4x USB-Hub Front</li> <li>• Firewire CCD colour camera 1,4 MPixel</li> <li>• Network-capable with TCP / IP server</li> </ul>
<b>Software</b>	<ul style="list-style-type: none"> <li>• Single bonds up to complex programs,</li> <li>• Loop shapes can be saved in libraries</li> <li>• Optional pattern recognition</li> </ul>
<b>Speed</b>	20 wires per minute
<b>Dimenstions</b>	W x D x H – 70 x 65x 70 cm, weight approx. 80kg
<b>Connections</b>	100-240 VAC, 1 Phase, 50/60 Hz, max 500 VA Ø 6mm standard vacuum tubing
<b>Heater controller</b>	Integrated in the machine 0-250C°

### Die 56xx Series:

The semi-automatic Wedge-Wedge Bonder 5650 fills the gap between the to the automatic bonder.

Based 56xx-series the bonder is fully PC controlled and allows any number of bonds to be programmed.

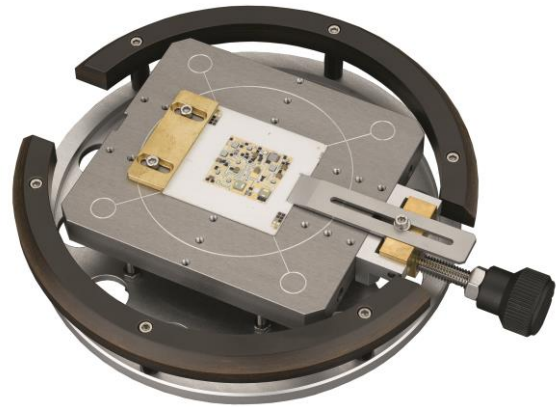
Pre-programmed adjust points are targeted through the camera's cross hair targeting system and the programmed bonds are executed automatically.

Two operating modes are available: Single bond for repair of various samples in order to perform a single bond. (manual-automatic) Multi wire for teaching and bond-ing of single chips or various samples (semi & fully automatic). The 5650 can also be used as a Au Wire or AL Thin Wire Bonder as well as pull-/shear tester by simply replacing the bond head and loading the appropriate soft-ware.

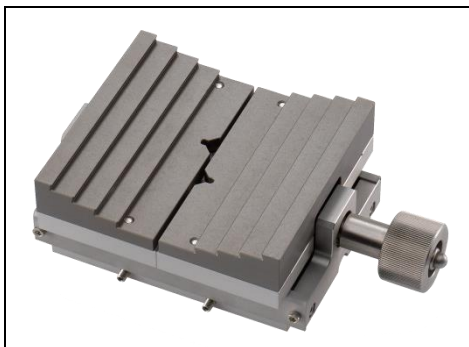
Set up time: ~3 minutes.  
Ask us for more information !

## Workholder

Standard-Workholder  
for parts up to 4x4"  
with Vacuum und mechanical clamping



## Optional:



workholders up to 4x4"  
with jaws



TO workholder with  
mechanical clamping



4x4" workholder with  
rubberized surface and  
mechanical clamping

### F&S Bondtec Semiconductor GmbH

Industriezeile 49a

A-5280 Braunau am Inn

Tel.: +43-7722-67052-8270

Fax: +43-7722-67052-8272

Mail: [info@fsbondtec.at](mailto:info@fsbondtec.at)

Web: [www.fsbondtec.at](http://www.fsbondtec.at)

**Hilpert**  
electronics

Ihr Vertriebspartner/ Votre représentant:

Hilpert electronics AG

Täferenstrasse 29

5405 Baden-Dättwil

Schweiz / Suisse

Tel: +41 56 483 25 25

Fax: +41 56 483 25 20

Mail: [office@hilpert.ch](mailto:office@hilpert.ch)

Web: [www.hilpert.ch](http://www.hilpert.ch)

